

# Procurement Policy (Beef)

---

The Marubeni Group is committed to maintaining food safety, and to expanding the sale of high-quality, sustainable premium beef, as outlined in the policy below:

## **1. Ensuring Traceability**

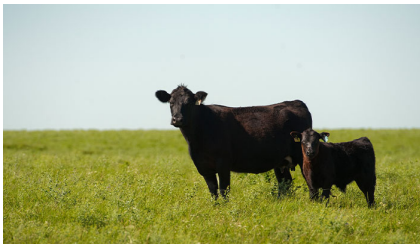
The Marubeni Group's beef-related businesses ensure traceability of beef to the herd at farms and/or feedlots. We also aim to secure traceability of imported beef to the herd at farms and/or feedlots.

## **2. Initiatives to Reduce Environmental Impact**

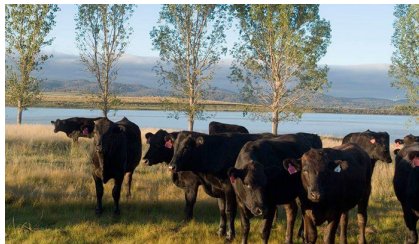
The Group's beef-related businesses regularly assess the impact of their operations on the environment and aim to reduce their environmental footprint.

## **3. Animal Welfare and Food Safety Initiatives**

During the production of our beef products, in addition to ensuring food safety, we engage in business operations that give consideration to animal welfare.



Black Angus cattle (Photo: Creekstone)



Black Angus cattle (Photo: Rangers Valley)